

0180 / 0181

Diaphragm / piston pressure switches up to 250 V

- Zinc-plated steel (CrVI-free)
- Snap action with silver contacts
- Overpressure safety up to 1,450 / 5,801 / 10,152 psi (100 / 400 / 700 bar)¹⁾
- Differential adjustable at factory

p _{max.} in psi (bar)	Adjustment range in psi (bar)	Tolerance in psi (bar) at room temperature	Male thread	Order number
-----------------------------------	----------------------------------	---	-------------	--------------

0180 Diaphragm pressure switches with spade terminal

p _{max.} in psi (bar)	Adjustment range in psi (bar)	Tolerance in psi (bar) at room temperature	Male thread	Order number
			M 10x1 taper M 12x1.5 cyl. 1/4" BSPP 1/8" NPT 1/4" NPT 7/16-20 UNF 9/16-18 UNF	0180 - 457 01 - X - 001 0180 - 457 02 - X - 002 0180 - 457 03 - X - 003 0180 - 457 04 - X - 318 0180 - 457 09 - X - 314 0180 - 457 20 - X - 301 0180 - 457 21 - X - 302
1,450 psi ¹⁾ (100 bar)	4.35 - 21.75 psi (0.3 - 1.5 bar)	± 2.90 psi (± 0.2 bar)	M 10x1 taper M 12x1.5 cyl. 1/4" BSPP 1/8" NPT 1/4" NPT 7/16-20 UNF 9/16-18 UNF	0180 - 458 01 - X - 040 0180 - 458 02 - X - 041 0180 - 458 03 - X - 042 0180 - 458 04 - X - 343 0180 - 458 09 - X - 340 0180 - 458 20 - X - 341 0180 - 458 21 - X - 342
			14.5 - 145 psi (1 - 10 bar)	± 7.25 psi (± 0.5 bar)
5,801 psi ¹⁾ (400 bar)	145 - 725 psi (10 - 50 bar)	± 43.5 psi (± 3.0 bar)	M 10x1 taper M 12x1.5 cyl. 1/4" BSPP 1/8" NPT 1/4" NPT 7/16-20 UNF 9/16-18 UNF	0180 - 459 01 - X - 007 0180 - 459 02 - X - 008 0180 - 459 03 - X - 009 0180 - 459 04 - X - 320 0180 - 459 09 - X - 311 0180 - 459 20 - X - 305 0180 - 459 21 - X - 306
			145 - 1,450 psi (10 - 100 bar)	± 43.5 - 72.5 psi (± 3.0 - 5.0 bar)
	145 - 1,450 psi (10 - 100 bar)	± 43.5 - 72.5 psi (± 3.0 - 5.0 bar)	M 10x1 taper M 12x1.5 cyl. 1/4" BSPP 1/8" NPT 1/4" NPT 7/16-20 UNF 9/16-18 UNF	0180 - 461 01 - X - 010 0180 - 461 02 - X - 011 0180 - 461 03 - X - 012 0180 - 461 04 - X - 321 0180 - 461 09 - X - 312 0180 - 461 20 - X - 307 0180 - 461 21 - X - 308

0181 Piston pressure switches with spade terminal

p _{max.} in psi (bar)	Adjustment range in psi (bar)	Tolerance in psi (bar) at room temperature	Male thread	Order number
			M 10x1 taper M 12x1.5 cyl. 1/4" BSPP 1/8" NPT 1/4" NPT 7/16-20 UNF 9/16-18 UNF	0181 - 460 01 - X - 001 0181 - 460 02 - X - 002 0181 - 460 03 - X - 003 0181 - 460 04 - X - 304 0181 - 460 09 - X - 303 0181 - 460 20 - X - 301 0181 - 460 21 - X - 302
10,152 psi ¹⁾ (700 bar)	725 - 2,900 psi (50 - 200 bar)	± 72.5 psi (± 5.0 bar)		

Seal material – Application areas

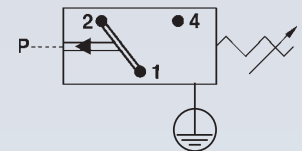
NBR (BunaN)	Hydraulic/machine oil, heating oil, air, nitrogen, etc.	1
EPDM	Brake fluid, hydrogen, oxygen, acetylene, etc.	2
FKM(Viton®)	Hydraulic fluids (HFA, HFB, HFD), petrol/gasoline, etc.	3
FFKM	Hot water, chemical acids, diluted alkalis, ketones, esters, alcohols	6
HNBR ²⁾	Chemical acids, diluted alkalis, ketones, ester's, alcohols	9

Refer to page 53 for the temperature range and application thresholds of sealing materials. ↓

Your order number: 018X - XXX XX - X - XXX

M.4

hex 27



M



¹⁾ Static value. Dynamic value is 30-50% lower. Values pertain to the hydraulic/pneumatic part of the pressure switch.

²⁾ HNBR diaphragm not available for pressure ranges between 4.35 - 21.75 psi (0.3 - 1.5 bar).

Pressure switches hex 27

Technical details

M.4

hex 27



Temperature resistance of sealing materials	NBR - diaphragm pressure switches, $p_{max} = 4,352 / 5,800$ psi (300 / 400 bar)	-40 °F ... +212 °F (-40 °C ... +100 °C)
	NBR - diaphragm pressure switch, $p_{max} = 1,450$ psi (100 bar)	-22 °F ... +212 °F (-30 °C ... +100 °C)
	EPDM	-22 °F ... +248 °F (-30 °C ... +120 °C)
	EPDM-TW (in diaphragm pressure switch)	-4 °F ... +212 °F (-20 °C ... +100 °C)
	FKM (in diaphragm pressure switch)	+23 °F ... +248 °F (-5 °C ... +120 °C)
	FKM (in piston pressure switch)	+5 °F ... +248 °F (-15 °C ... +120 °C)
	FFKM	-4 °F ... +248 °F (-20 °C ... +120 °C)
	Silicone (in diaphragm pressure switch)	-40 °F ... +248 °F (-40 °C ... +120 °C)
	HNBR	-22 °F ... +248 °F (-30 °C ... +120 °C)
Burst pressure (diaphragm pressure switch, overpressure resistance 100 bar)	2,900 psi (200 bar)	
Burst pressure (diaphragm pressure switch, overpressure resistance 400 bar)	10,152 psi (700 bar) for threads M10, G 1/8, R 1/8, NPT 1/8 and type 0140 up to max. 600 bar)	
Burst pressure (Piston pressure switch)	14,500 psi (1,000 bar) for threads M10, G 1/8, R 1/8, NPT 1/8 and type 0140 up to max. 600 bar)	
Switching frequency	200/min	
Mechanical life expectancy	1,000,000 cycles (for diaphragm pressure switches, life expectancy value only applies for switching pressures to max. 50 bar)	
Pressure rise rate	≤ 14,500 psi/ms (≤ 1,000 bar/s)	
Hysteresis (only adjustable at factory)	Adjustable average value 10 ... 30 % depending on type Types 0140 and 0141 cannot be adjusted	
Vibration resistance	10 g; 5 ... 200 Hz sine wave; DIN EN 60068-2-6	
Shock resistance	294 m/s ² ; 14 ms half sine wave; DIN EN 60068-2-6, DIN EN 60068-2-29	
Protection class	IP65 with socket device, terminals IP00	
Weight	approx. 100 g	

Switching performance and materials overview

Type	0140	0141	0170	0171	0180	0181	0183	0186	0187	0190	0191	0196	0197
5 ... 24 V DC										•	•	•	•
10 ... 42 V AC/DC			•	•									
10 ... 250 V AC/DC	•	•			•	•	•	•	•				
3 ... 50 mA										•	•	•	•
10 mA ... 2 A	•	•											
10 mA ... 4 A			•	•	•	•	•	•	•				
Gold contacts										•	•	•	•
Silver contacts	•	•	•	•	•	•	•	•	•				
Adjustable hysteresis			•	•	•	•	•	•	•	•	•	•	•
Zinc-plated steel (CrVI-free)	•	•	•	•	•	•	•			•	•		
Stainless steel 1.4305								•	•			•	•

M

Pressure switches hex 27

Electrical values

0140 / 0141		
Rated working voltage U_e :	Rated working current I_e	Usage category ¹⁾
250 VAC 50 / 60 Hz	2 A	AC12
24 VDC	2 / 1 A	DC12 / DC13
50 VDC	1 / 0.5 A	DC12 / DC13
75 VDC	0.5 / 0.25 A	DC12 / DC13
125 VDC	0.2 / 0.1 A	DC12 / DC13
250 VDC	0.15 / 0.1 A	DC12 / DC13
Rated insulation voltage U_i :	300 V	
Rated impulse withstand voltage U_{imp} :	4 kV	
Conventional thermal current I_{the} :	5 A	
Switching overvoltage:	< 2.5 kV	
Rated frequency:	DC and 50 / 60 Hz	
Nominal current of short-circuit mechanism:	to 3.5 A	
Rated short-circuit current:	< 350 A	
IP class of protection according to DIN EN 60529:1991+A1:1999:	IP65 with socket device, terminals IP00	
Tightening torque of terminal screws:	< 0.35 Nm	
Connector cross-section:	0.5 - 1.5 mm ²	

0170 / 0171 / 0180 / 0181 / 0183 / 0186 / 0187 / 0190 / 0191 / 0196 / 0197		
Rated working voltage U_e :	Rated working current I_e	Usage category ¹⁾
250 VAC 50 / 60 Hz	4 A	AC12
250 VAC 50 / 60 Hz	1 A	AC14
24 VDC	4 / 2 A	DC12 / DC13
50 VDC	2 / 1 A	DC12 / DC13
75 VDC	1 / 0.5 A	DC12 / DC13
125 VDC	0.3 / 0.2 A	DC12 / DC13
250 VDC	0.25 / 0.2 A	DC12 / DC13
Rated insulation voltage U_i :	300 V	
Rated impulse withstand voltage U_{imp} :	2.5 kV	
Conventional thermal current I_{the} :	5 A	
Switching overvoltage:	< 2.5 kV	
Rated frequency:	DC and 50 / 60 Hz	
Nominal current of short-circuit mechanism:	to 5 A	
Rated short-circuit current:	< 350 A	
IP class of protection according to DIN EN 60529:1991+A1:1999:	IP65 with socket device, terminals IP00	

Socket devices and protective caps

- IP65 socket devices or IP54 rubber protective caps for increased protection
- Simple installation with plug-in socket devices

<p>Rubber protective cap</p> <p>With central cable feed-through for 1.5 - 5 mm cable diameter</p> <p>With rubber protective cap fitted: IP54</p> <p>Suitable for voltages up to 42 V</p>	<p>Rubber protective cap</p> <p>With two cable feed-throughs for 1.7 - 2,2 mm cable diameter</p> <p>With rubber protective cap fitted: IP54</p> <p>Suitable for voltages up to 42 V</p>	<p>Rubber protective cap</p> <p>With two cable feed-throughs for 1.7 - 2,3 mm cable diameter</p> <p>With rubber protective cap fitted: IP54</p> <p>Suitable for voltages up to 42 V</p>	<p>Socket device</p> <p>cSAus approval Housing: Polyamide PG9 screw fitting (tightening range 6 - 9 mm)</p> <p>With socket device fitted: IP65</p> <p>Suitable for voltages up to 250 V</p>
<p>suitable for series 0151 / 0163 / 0164 / 0166 0167 / 0168 / 0169</p>	<p>suitable for series 0151 / 0163 / 0164 / 0166 0167 / 0168 / 0169</p>	<p>suitable for series 0170 / 0171 / 0180* / 0181* / 0183* / 0186* / 0187* 0190 / 0191 / 0196 / 0197 (*up to 42 V)</p>	<p>suitable for series 0170 / 0171 / 0180 / 0181 0183 / 0186 / 0187 0190 / 0191 / 0196 / 0197</p>
<p>Article number: 1-1-66-621-010</p>	<p>Article number: 1-1-66-621-003</p>	<p>Article number: 1-1-70-621-007</p>	<p>Article number: 1-1-80-652-002</p>

Pressure switches hex 27

Changeover with silver or gold contacts



- Switching point can be adjusted when fitted on site¹⁾
- Factory adjustable hysteresis (except types 0140 and 0141)
- High overpressure safety and long service life under harsh conditions
- Operating voltage up to 250 V
- Series 0140 / 0141 with protective insulation
- For ready-wired customized versions refer to chapter M.5, starting at page 62
- For pressure switches with integrated connectors refer to chapter M.2, starting at page 32

¹⁾ Pressure switches can also be supplied preset at factory. Our preset switches are sealed with lacquer paint, set points are embossed on the housing.