

# Water MANAGEMENT

PRESSURE SWITCHES & TRANSDUCERS





# Mechanical Pressure Switches

Mechanical pressure switches monitor the pressure of gas or liquid media and close or open an electrical circuit on reaching a set threshold.

- ▶ Integrated Connector
- ▶ SPDT
- ▶ Explosion-Protected Pressure Switch - ATEX
- ▶ Compact Design
- ▶ Vacuum Switches

Pressure switches for water supply monitoring to prevent machine damage.  
Application: Protection of machines for drinking water.



Our Pressure Switches and Transducers are designed to help control position, safety, and flow. Some examples of water management equipment that work reliably with SUCO products include filtration, pumps, pressure monitoring and control equipment, as well as sanitation, purification, and desalination.

# Electronic Pressure Switches

An electronic pressure switch converts the pressure which is present at the measuring cell into a digital, electrical switch signal (ON / OFF). Since an electronic pressure switch has no moving parts, it usually has a much longer service life and provides a higher level of precision.

- ▶ Electronic Pressure Switches
- ▶ Programming Device
- ▶ Menu-controlled Electronic Switch



# Pressure Transducers

A pressure transmitter (also called pressure transducer or pressure converter) is a component used to convert a pneumatic or hydraulic pressure to an electrical signal, such as a current or voltage.



Our **High-Performance Series** provides outstanding overpressure protection (up to 4 x). Ideal choice for mobile hydraulic applications and offers long service life even under high pressure change rates.

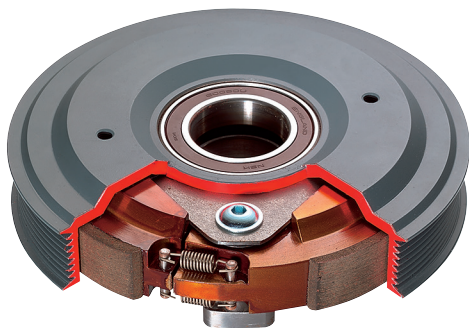
The **Digital Pressure Transmitter with CANopen / CAN J1939** is made of stainless steel construction with high reliability, even in very rough environments.

Pressure transducers with flush connector. Application: Manure.  
Pressure transducers for water recycling.



The ESI **GD4200-USB**® Digital Pressure Transducer has been designed to measure, analyze and record pressure directly on your computer. It allows the user to measure up to 16 pressure inputs simultaneously and easily create customized test certificates. Sample rate up to 1,000 Hz (1,000 readings per second).

The **PR3200 Differential Pressure Transmitter** uses two ceramic pressure diaphragms, offering high stability and performance with true wet/wet operation, suitable for use with all liquids and gases compatible with stainless steel and aluminum.



## Clutches & Brakes

Suco designs and manufactures individual, customer-specific solutions when standard models cannot be used.

- ▶ **Centrifugal Clutches** allow a soft, load-free start from rest, automatically engaging as the speed increases.
- ▶ **Centrifugal Brakes** automatically limit the maximum RPM of a shaft, providing protection against over speed, without the need of external controls.
- ▶ **Electromagnetic Clutches and Brakes** are trouble-free, require no maintenance, and are extremely reliable.

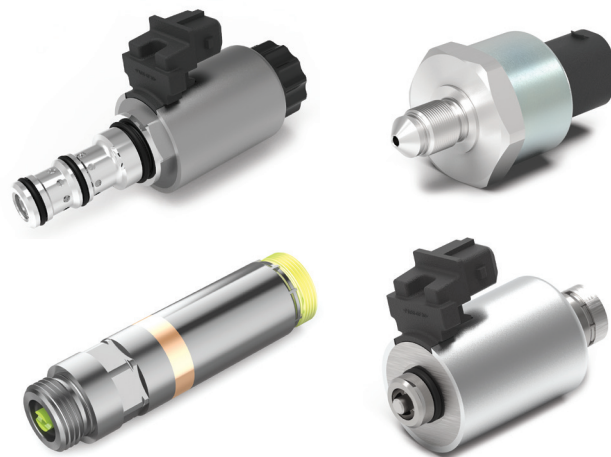


# Hydraulic Valve Solutions

SUCO Group USA is proud to partner with ETO in our efforts to provide our customers with innovative products and solutions.

Additional Products for Pumps, Motors, and Valve Solutions:

- ▶ Cartridge Valves
- ▶ Actuators
- ▶ Solenoid Valves
- ▶ Modular Systems



## Suco Group - Your Specialist in Pressure Monitoring and Transmission Technology

- ▶ Over 80 years of experience
- ▶ Our products are 100% tested before they leave our production facility
- ▶ Maintaining a quality system in compliance with ISO 9001: 2015

**We look forward to serving you!**

## Contact Us

Phone: 1-800-473-7313 | Fax: 561-989-8816  
Sales Email: [sales@sucoesi.com](mailto:sales@sucoesi.com)  
Customer Service Email: [cs@sucoesi.com](mailto:cs@sucoesi.com)

Visit Us [www.sucoesi.com](http://www.sucoesi.com)

SUCO ESI North America  
6560 W Rogers Cir, Suite 22,  
Boca Raton, FL 33487 USA

SUCO products meet the following international standards

